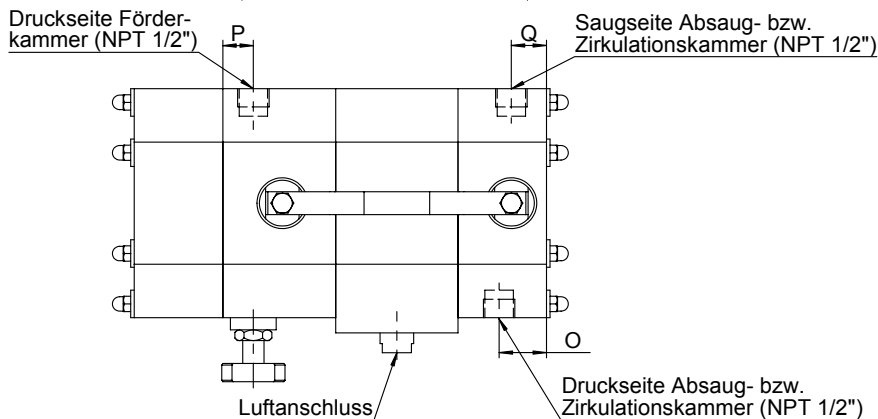
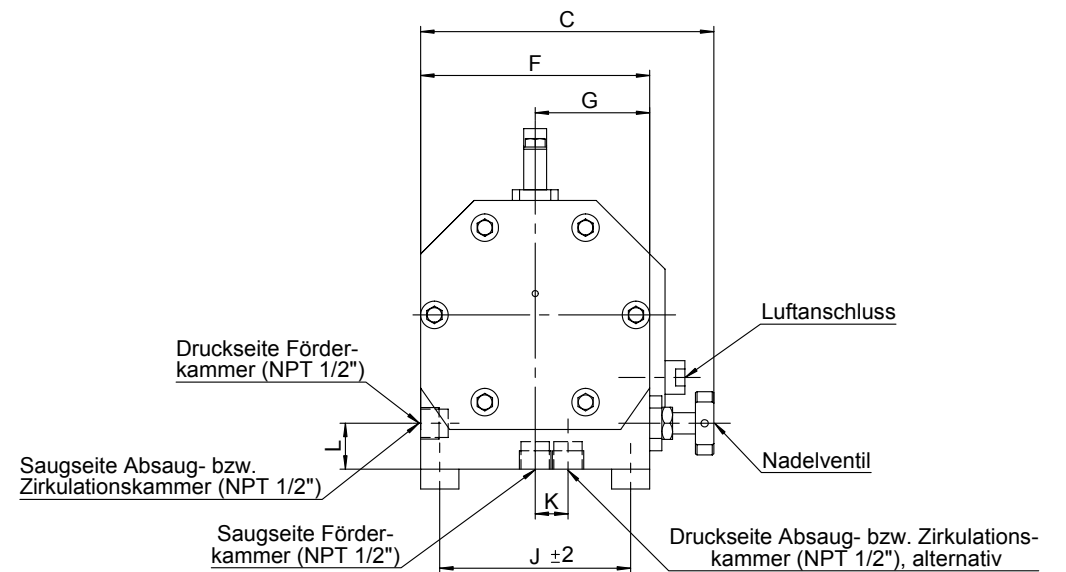
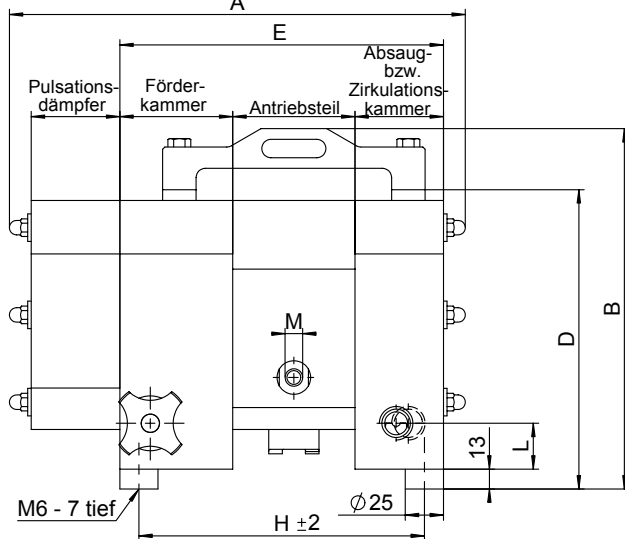
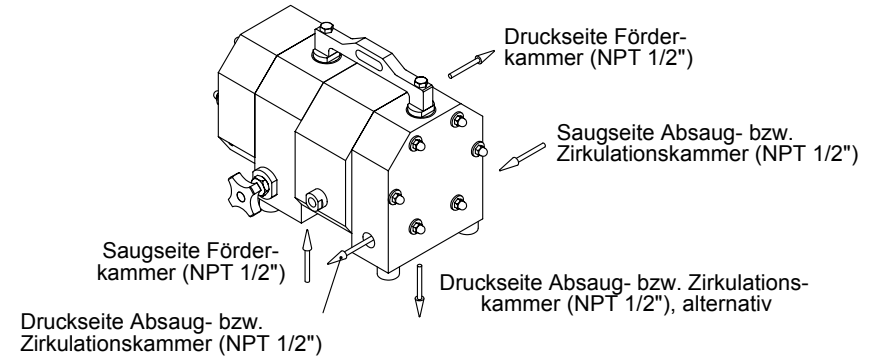
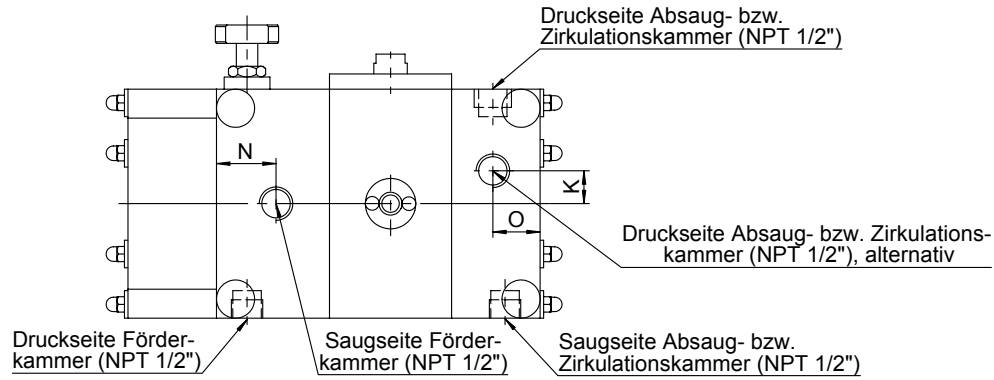


Maß- und Anschlusspläne F-Serie

- Serienausstattung
- Sonderausstattung manuelles Rückfördersystem (Code R1)
- Sonderausstattung pneumatisches Rückfördersystem (Code R2)



	A	B	C	D	E	F	G	H	J	K	L	M	N	O	P	Q
F 10	230	191	148	151	164	106	53	139	81	20	28	R 1/8"	33	30	19	23
F 20	300	236	192	196	212	150	75	187	125	21,5	30	R 1/4"	39	31	20	23

ALMATEC®

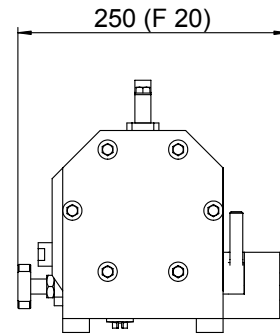
ALMATEC Maschinenbau GmbH
 Carl-Friedrich-Gauß-Str. 5
 D-47475 Kamp-Lintfort

Telefon (0 28 42) 9 61 - 0
 Telefax (0 28 42) 9 61 - 40
<http://www.almatec.de>
 e-mail: info@almatec.de

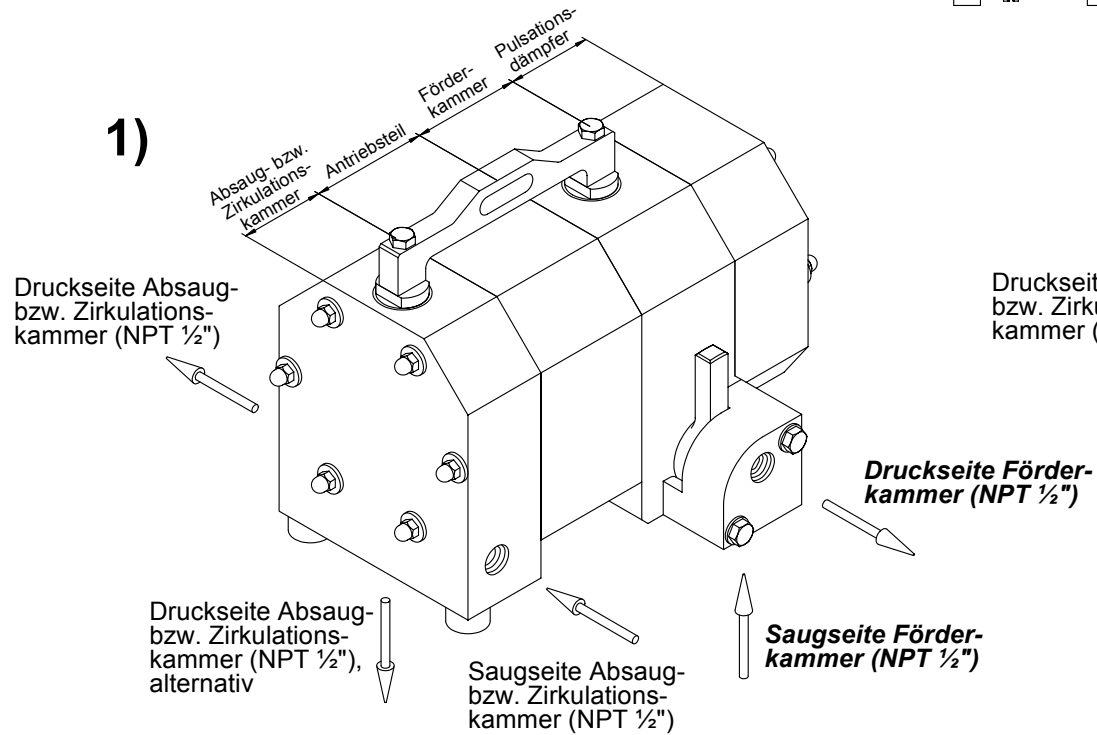
ALMATEC®

F - Serie

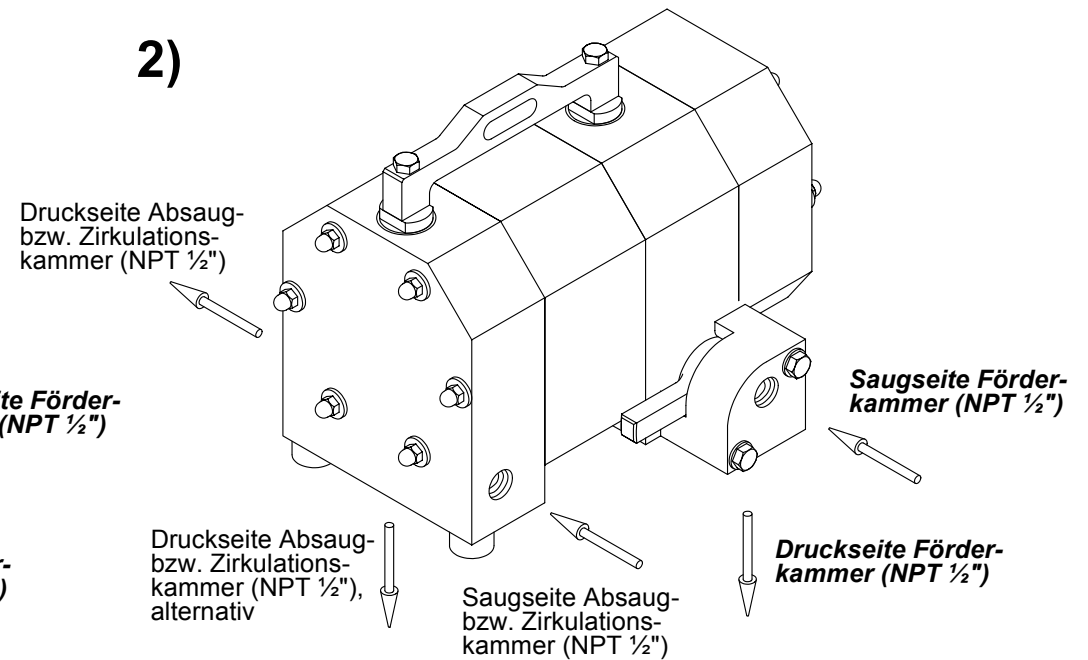
Manuelles Rückfördersystem (Code R1)



1)

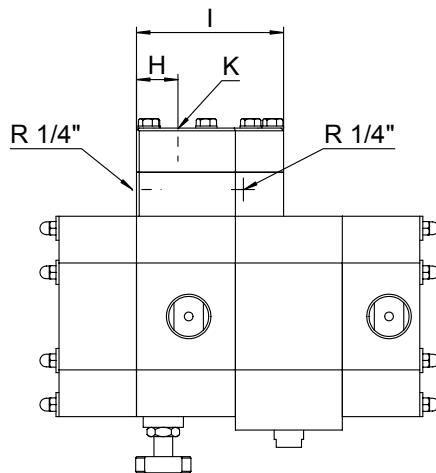
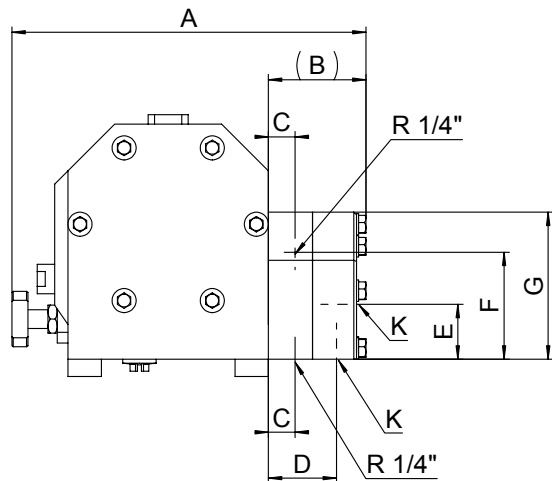
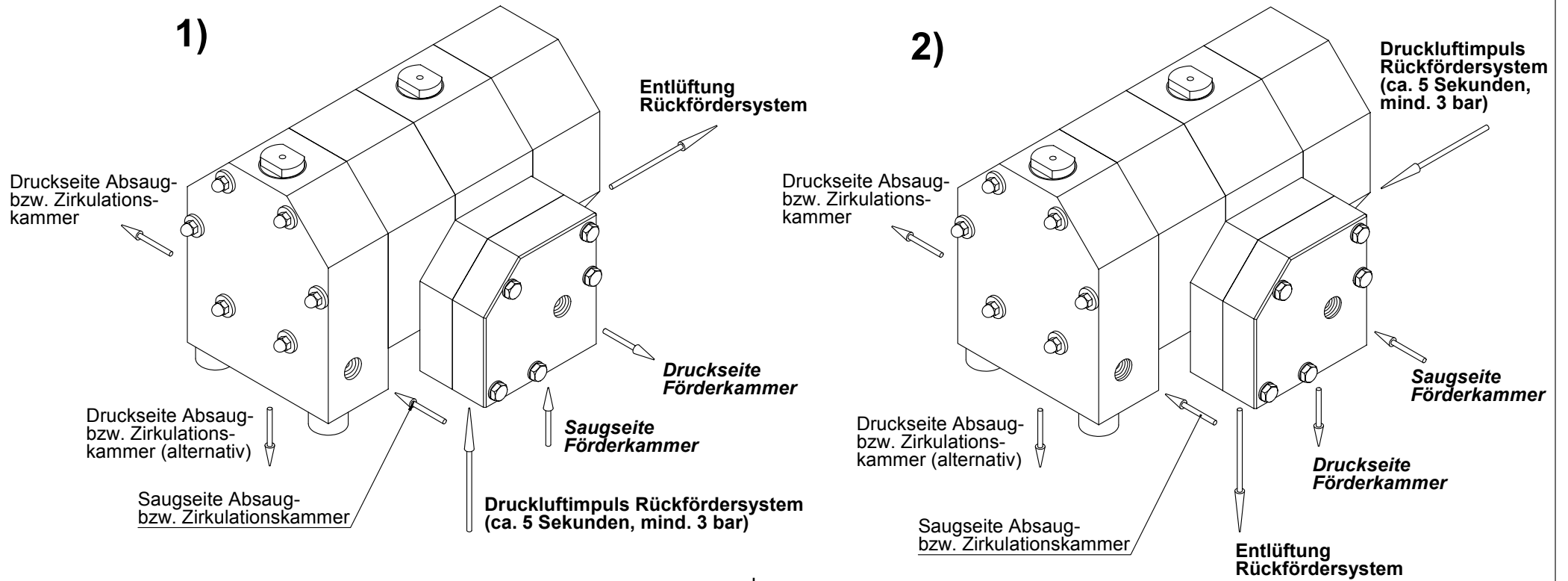


2)



F - Serie

Pneumatisches Rückförsersystem (Code R2)



	A	B	C	D	E	F	G	H	I	K
F 20	266	74	20	51	41	80	110	31	110	NPT 1/2"